



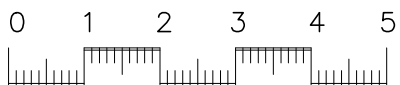
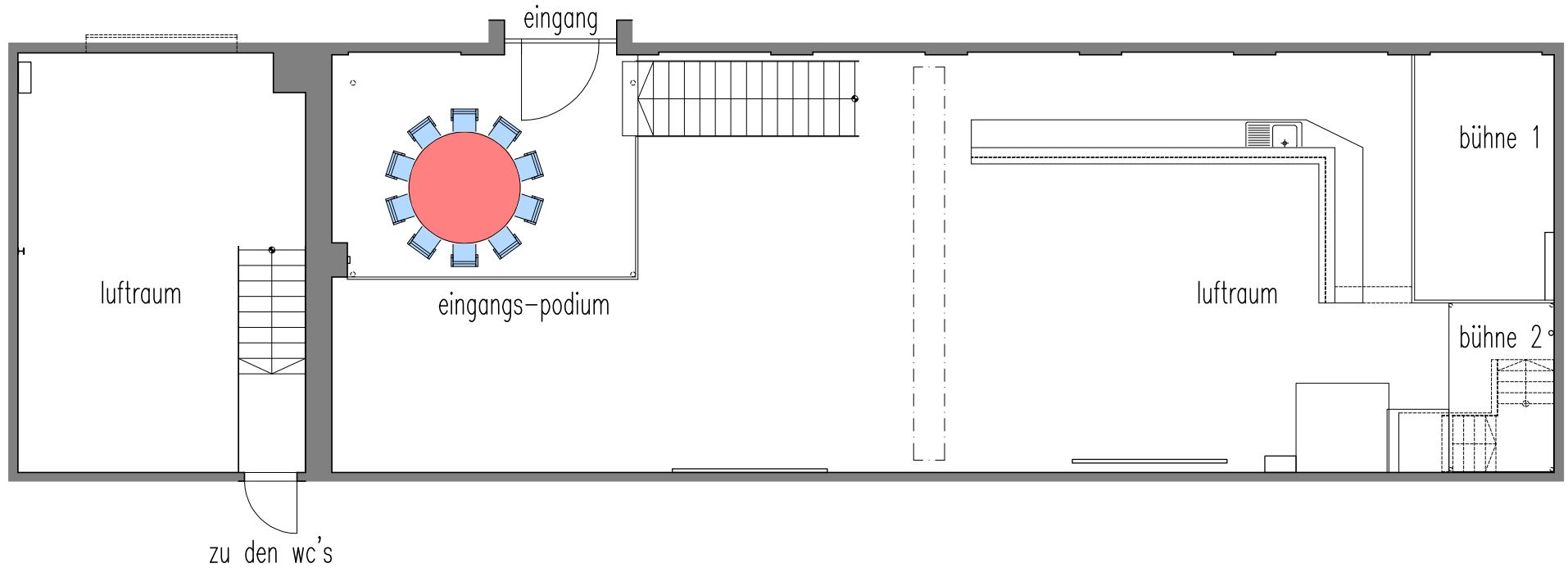
Labüsch
labuesch.ch

Bestuhlungsvorschläge

labüsch-bar
lagerplatz 8 / kesselschmiede 27, 8400 winterthur

layout tische rund (Ø 180cm), eingang/podium

grundriss 1:100, dat. 29.05.13/rj

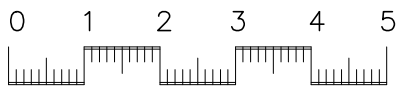
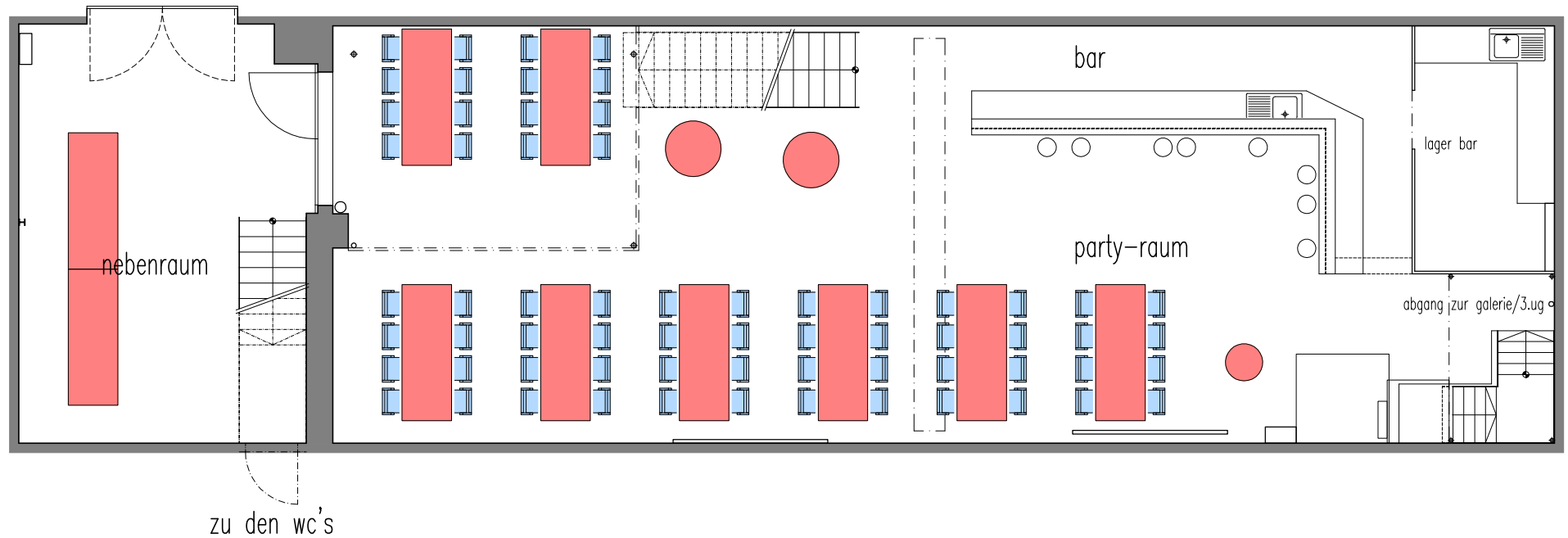




Labüsch
labuesch.ch

Bestuhlungsvorschläge

labüsch-bar
lagerplatz 8 / kesselschmiede 27, 8400 winterthur
layout variante 1, bar-geschoss (2.ug)
grundriss 1:100, dat. 23.08.12/rj

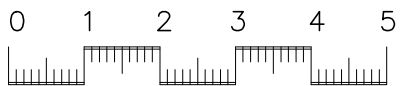
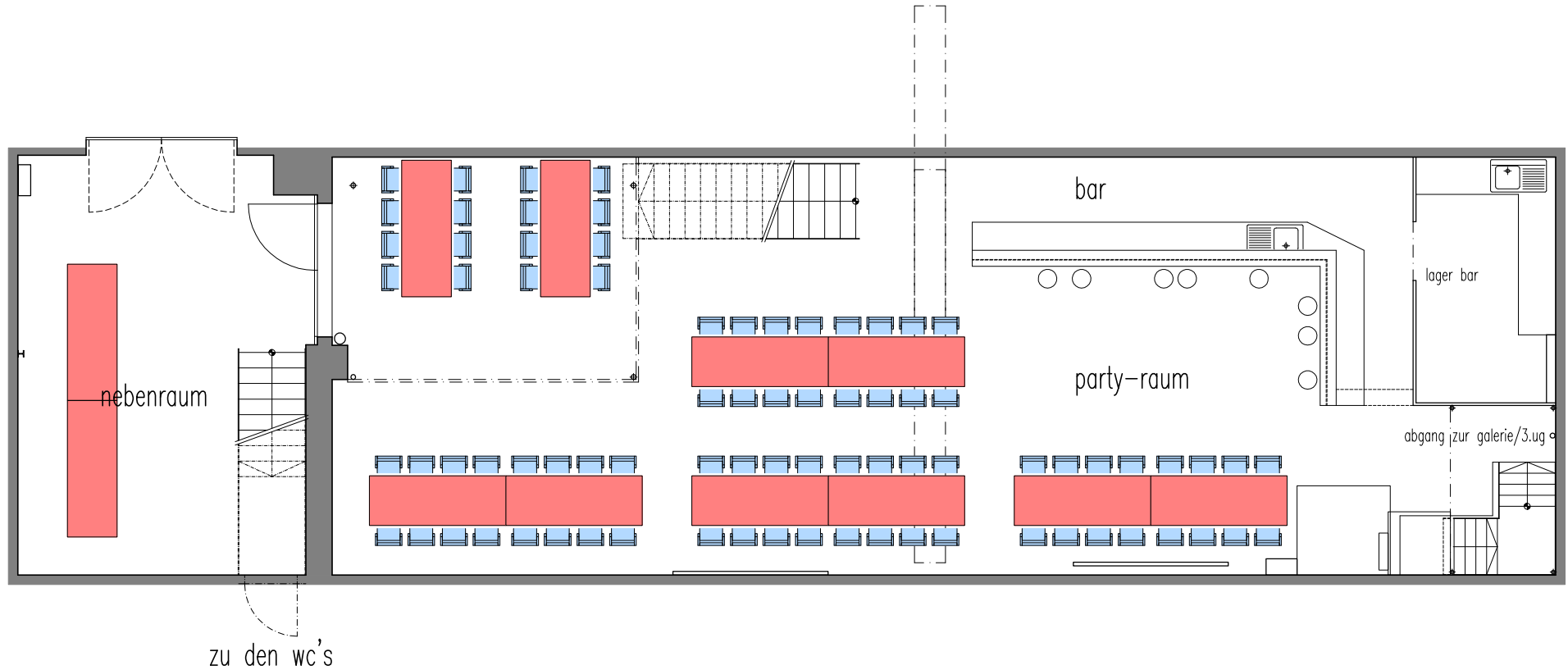




Labüsch
labuesch.ch

Bestuhlungsvorschläge

labüsch-bar
lagerplatz 8 / kesselschmiede 27, 8400 winterthur
layout variante 2, bar-geschoss (2.ug)
grundriss 1:100, dat. 23.08.12/rj

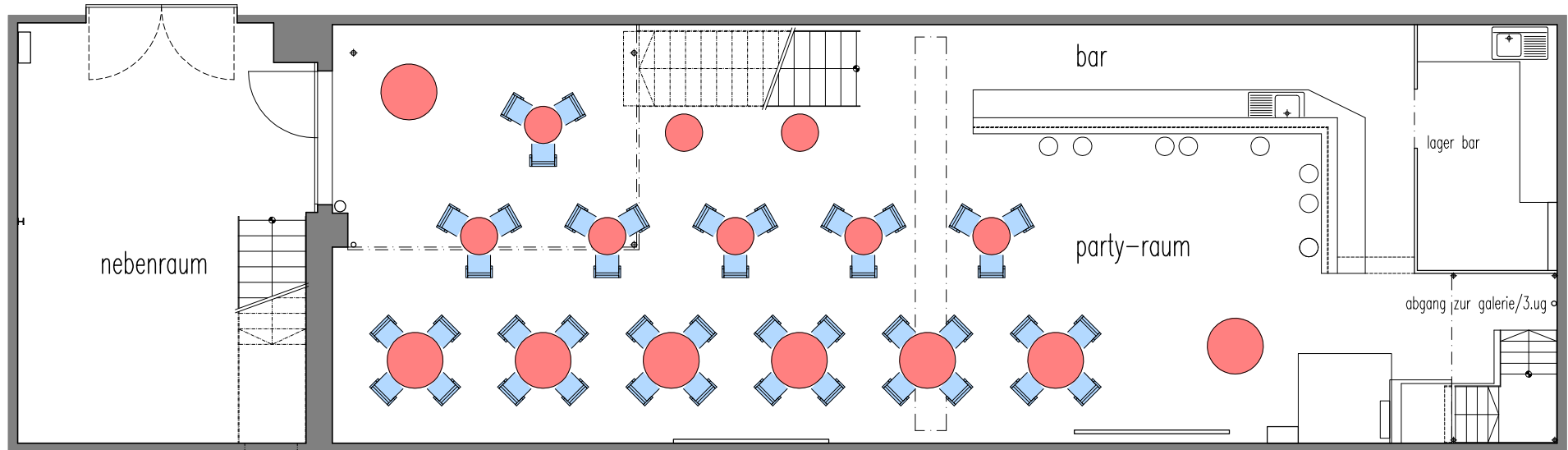




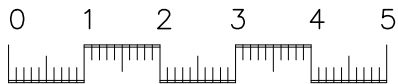
Labüsch
labuesch.ch

Bestuhlungsvorschläge

labüsch-bar
lagerplatz 8 / kesselschmiede 27, 8400 winterthur
layout variante 3, bar-geschoss (2.ug)
grundriss 1:100, dat. 23.08.12/rj



zu den wc's





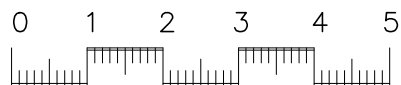
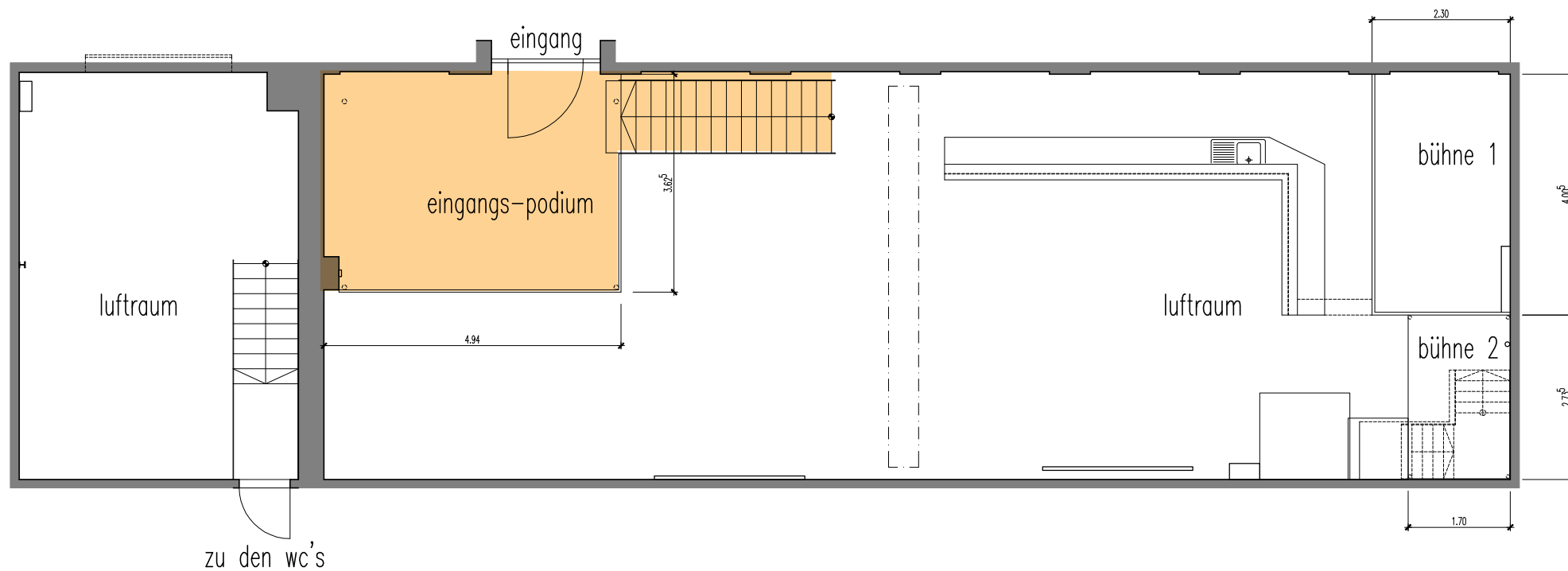
Labüsch

labuesch.ch

labüsch-bar
lagerplatz 8 / kesselschmiede 27, 8400 winterthur

eingangs geschoss (1.ug)

grundriss 1:100, dat. 30.07.18/rj



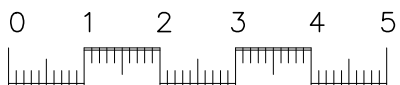
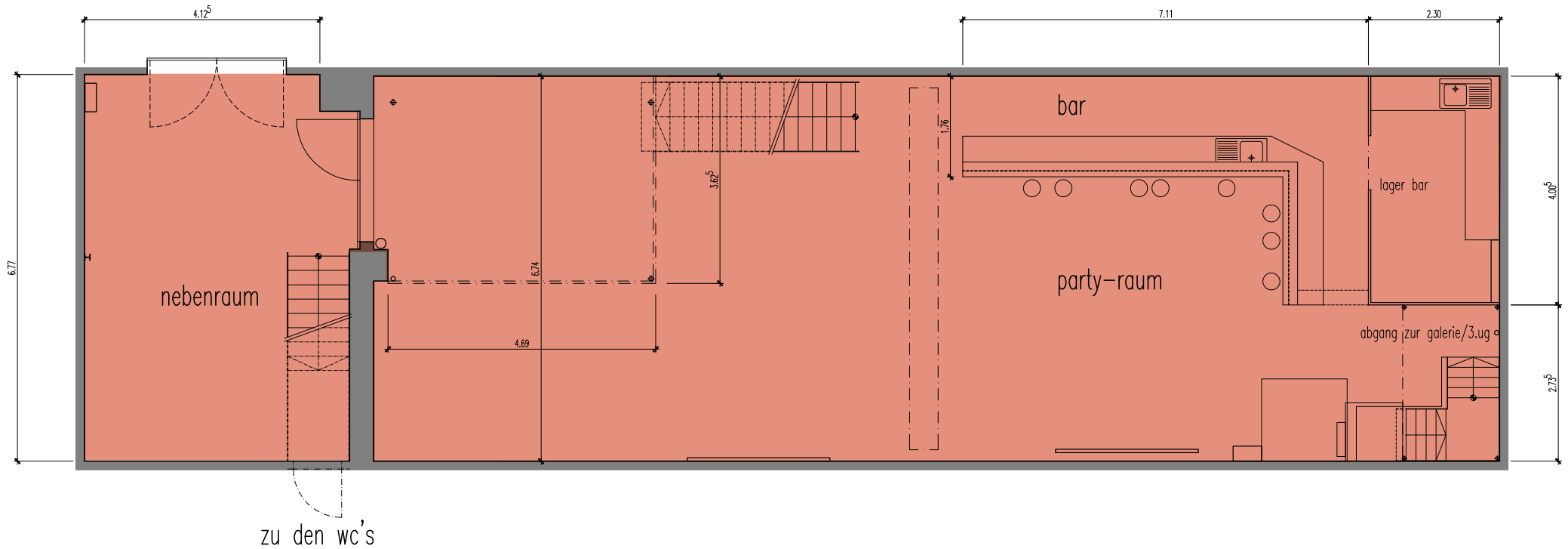


Labüsch
labuesch.ch

labüsch-bar
lagerplatz 8 / kesselschmiede 27, 8400 winterthur

bar-geschoss (2.ug)

grundriss 1:100, dat. 30.07.18/rj





Labüsch
labuesch.ch

labüsch-bar
lagerplatz 8 / kesselschmiede 27, 8400 winterthur

bestand galeriegeschoss (3.ug)

grundriss 1:100, dat. 29.05.13/rj

achtung: alle masse sind cirka-masse!

